

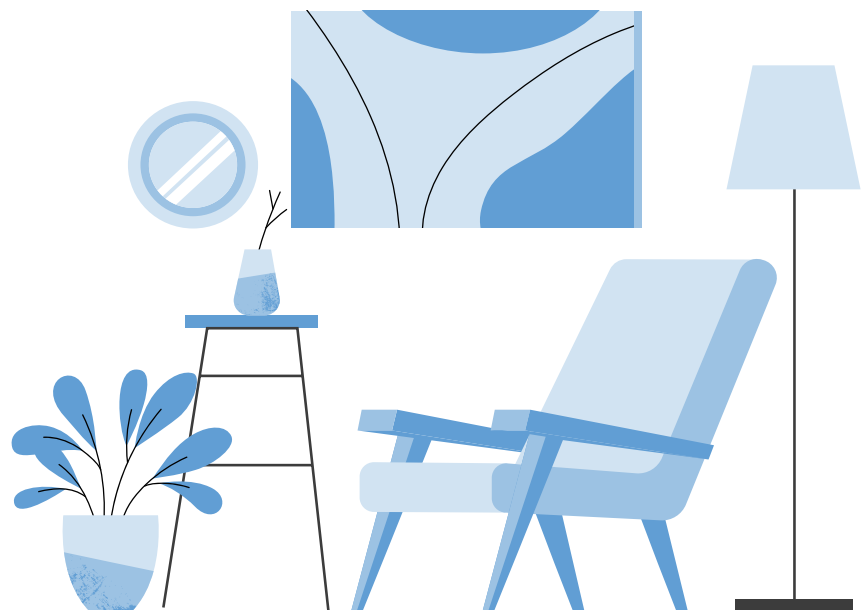
AUSTRALIAN ACADEMY OF INTERIOR DESIGN

RTO CODE: 46046



Student Handbook

YOUR GUIDE TO LEARNING WITH US



E. info@interiordesignacademy.com.au
W. www.interiordesignacademy.com.au
T. 03 8658 1593
A. Australian Academy of Interior Design
Level 31
120 Collins Street
Melbourne
3000 Victoria

interiordesignacademy.com.au



**To make
high quality
learning
accessible;
empowering
people to do
what they
truly love and
go further.**





ACKNOWLEDGEMENT OF UNDERSTANDING

The RTO is responsible for the quality of the training and assessment in compliance with the Standards for Registered Training Organisations (RTOs) 2015, and for the issuance of the AQF [Australian Qualifications Framework] certification documentation.

To ensure sound judgment and decision making, and to provide the opportunity to potential students to raise issues, concerns and questions prior to commencement of training, the Australian Academy of Interior Design makes the Student Handbook available to all learners by providing a copy or accessing through the Australian Academy of Interior Design website at:

www.interiordesignacademy.com.au

The Australian Academy of Interior Design requires each student to read and understand the information contained in this Student Handbook prior to enrolment.

For any concerns, questions or clarifications please contact the Australian Academy of Interior Design at:

Address: Level 31, 120 Collins Street, Melbourne
3000 Victoria

Email: info@interiordesignacademy.com.au

Contact number: 03 8658 1593

Table of Contents

INTRODUCTION	7	Assessment.....	20
Mission Statement	7	Principles of Assessment.....	21
Vision Statement.....	7	Rules of Evidence.....	22
Training Programs.....	7	Assessment Results.....	22
Student Guarantee.....	7	Reasonable Adjustment.....	22
The Australian Academy of Interior Design Team	8	Additional Submission and Support.....	22
Student Support	8	Extensions for Assessment.....	22
Trainers.....	8	Assessment and Progression	22
Student Selection.....	8	Awards.....	23
Enrolment.....	8	Course Delivery	24
Unique Student Identifier	9	Recognition of Prior Learning (RPL)	24
Visa Requirements.....	9	Recognition Process.....	24
		How to apply for RPL.....	25
STUDYING AT THE AUSTRALIAN ACADEMY OF INTERIOR DESIGN	11	Recognition Decision.....	25
Personal & Academic Support.....	11	Credit Transfer	25
Language/Literacy and Numeracy	11	POLICIES AND PROCEDURES.....	27
Flexible Learning and Assessment.....	12	Access and Equity.....	27
Assessment Requirements	12	Complaints and Appeals Policy.....	27
Code of Conduct	14	Complaints.....	27
Change of Personal Details.....	15	Appeals	28
Evaluation and Feedback.....	16	Transition of Superseded Courses.....	29
Making the Most of your Training.....	16	Student Records.....	29
COURSE INFORMATION	18	Procedure.....	29
Training Programs.....	18	Record Keeping Policy for Assignments and Student Information.....	29
Competency Based Training.....	18	Fee Payment and Refund Policy.....	30
Flexible Delivery	18	Special Consideration.....	30
Computer Specifications and Requirements for the course.....	19	Exceptions.....	31
Evidence Requirements.....	20	Privacy Policy.....	31
		Workplace Health and Safety (WHS)	32



Introduction

Welcome to the Australian Academy of Interior Design! Our number one priority is to help you achieve your new qualification. We deliver the training and support that will help you complete your training goals as quickly as you can achieve them. You will receive training from our dedicated, passionate and qualified Trainers who are experienced in your vocational areas. This ensures that the training you will receive is current, relevant and easy to understand.

To ensure that your learning experience will be a positive one, our courses are delivered using excellent quality and innovative course materials. Our student support services team is committed to deliver an excellent experience to you. We wish you all the best in your studies and we look forward to helping you achieve your new qualification to advance your career.

This Student Handbook sets out the policies and procedures around the training and assessment that you will receive at the Australian Academy of Interior Design. Please read the Student Handbook before enrolling in any Australian Academy of Interior Design courses.

The Australian Academy of Interior Design is a Registered Training Organisation (RTO No. 46046) and is approved by Australian Skills Quality Authority as a deliverer of nationally recognised training, MSF50222 - Diploma of Interior Design from the Furnishing Training Package.

Mission Statement

“To make high quality learning accessible; empowering people to do what they truly love and go further.”

The Australian Academy of Interior Design is dedicated to the mission of making high quality learning more accessible, so that we can enable people to do what they truly love and go further. By delivering exceptional courses and training to students, we seek to have our learners acquire the skills and knowledge that they need, in order to either enjoy their hobbies, become more

creative, or go beyond and develop a new career or business. To do this, we will continuously strive to maintain the highest standards of quality and excellence in providing training to students, while simultaneously taking steps to ensure that barriers to entry for our courses will always remain as low or minimal as possible.

Vision Statement

The Australian Academy of Interior Design seeks to become Australia’s leading training institute renowned for developing career and life-enhancing opportunities for its graduates—who are renowned by the business and industry as being highly-skilled alumni that develop into leading industry professionals.

Training Programs

As a registered training organisation (RTO) in the vocational education and training (VET) sector, the Australian Academy of Interior Design offers the following nationally recognised qualification:

- **MSF50222 - Diploma of Interior Design (Release 2)**

For more information on the courses the Australian Academy of Interior Design has on offer, please refer to our website: www.interiordesignacademy.com.au

Student Guarantee

The Australian Academy of Interior Design guarantees to advise students of any changes to the services provided under agreement as soon as practicable, including any changes of ownership.

The Australian Academy of Interior Design Team

You may contact the Australian Academy of Interior Design on 03 8658 1593.

Student Support

Students completing a training program will be supported by the Australian Academy of Interior Design's Student Support Team. Our knowledgeable team will work with you to help you achieve success in your chosen field.

The Support Team can assist you through a variety of activities, which include but are not limited to:

- Assisting with logging in to the Online Learning Centre and with accessing the resources;
- Supporting flexible learning and processing extensions where applicable;
- Arranging contact between you and your trainer/assessors where required; and
- Assisting you with finding and understanding your trainer's feedback.

Trainers

Your trainers are qualified industry professionals, ready to guide you through your learning. Their feedback and guidance will ensure that you are job-ready for your chosen industry.

All Australian Academy of Interior Design trainers must follow the below requirements as outlined in the Standards for Registered Training Organisation 2015 (SRT0 2015) Clause 1.13 to 1.15:

Training and assessment is delivered by trainers and assessors who have:

1. Vocational competencies at least to the level being delivered and assessed;
2. Current industry skills directly relevant to the training and assessment being provided; and
3. Current knowledge and skills in vocational training and learning that informs their training and assessment.

4. The RTO's training and assessment is delivered only by persons who have:
 - TAE40116 Certificate IV in Training and Assessment or its successor, or
 - TAE40110 Certificate IV in Training and Assessment plus the following units:
 - TAELLN411 (or its successor) or TAELLN401A; and
 - TAEASS502 (or its successor) or TAEASS502A or TAEASS502B; or
 - A Diploma or higher-level qualification in adult education.
5. Where a person conducts assessment only, the RTO ensures that the person has:
 - As above; or
 - TAESS00011 Assessor Skill Set or its successor

Student Selection

The only prerequisites necessary to enrol in the MSF50222 - Diploma of Interior Design (Release 2) are that you must:

- be at least 18 years old
- have basic computer skills (navigate the web, send emails, upload/download documents, create documents and presentations, etc.) and
- pass a basic Language, Literacy, Numeracy (LLN) test, to year 10 level or equivalent.

Note: Students are required to complete a Language, Literacy, Numeracy (LLN) test as part of their pre-enrolment.

Enrolment

While the Australian Academy of Interior Design will endeavour to complete the enrolment process as quickly as possible, please allow up to 5 business days from confirmation of your payment for enrolment. Upon official registration as a student, learners will receive course information and personalised logins via email. The training and assessment resources necessary to complete the selected course are available on the student portal and accessed with these personalised logins.

Students can enrol by choosing one of two payment plans offered by the Academy: (1) a full one-time fee with an initial upfront deposit and a second payment after one month; or (2) a number of regular payments made throughout the enrolment period. Students who miss a regular payment will receive a reminder of the payment due. If fourteen (14) days pass without receipt of this payment, the student's enrolment will be suspended until the payment has been received. The student will be notified of the suspension. Once payment has been received, the suspended enrolment shall be restored. Please see the relevant course brochure for more information.

Unique Student Identifier

An initiative of the Australian Government is the requirement for all students of Vocational Education and Training to supply a Unique Student Identifier number to their VET provider. Students will be assisted by the Australian Academy of Interior Design to apply for and supply their USI if authorised by the student. The Australian Academy of Interior Design has a registered facility to verify each USI before issuance of any certification. Please be aware that no VET provider, including the Australian Academy of Interior Design, can issue a certificate for a VET qualification without being supplied with a student's USI.

Exemptions to the USI requirements may apply including for international students studying onshore and outside of Australia. For any student exempt from supplying a USI, completion results and records will not be available through the Commonwealth Registrar. The Australian Academy of Interior Design can use the following links to search for or create USIs (ONLY with student permission):

- <http://usi.gov.au/Pages/default.aspx>
- <https://portal.usi.gov.au/org/>

Visa Requirements

The Australian Academy of Interior Design is not a registered CRICOS provider. It is the student's obligation to advise the Australian Academy of Interior Design of their visa requirements. Students should contact the appropriate Government Department regarding their visa conditions and restrictions.



Studying at the Australian Academy of Interior Design

The Australian Academy of Interior Design conducts training courses to suit student needs, course type, and learning styles. The following student guidelines will help foster a healthy learning environment for all students.

Personal & Academic Support

As a student at the Australian Academy of Interior Design, you will enjoy the many benefits of studying at your own pace with flexible hours. Our student support team is available from Monday to Friday 8am – 5pm to assist you with any questions you may have.

Email: info@interiordesignacademy.com.au

Contact number: 03 8658 1593

The Australian Academy of Interior Design conducts assessment of needs as part of the pre-enrolment process and throughout the duration of the course. In such cases, the Australian Academy of Interior Design will ensure that the assessment of need is undertaken at the earliest possible opportunity and any identified support needs issues are managed.

Learner support may include but is not limited to any disability or impairment that restricts access and equity as well as, computer literacy or English language, literacy and numeracy (LLN) information obtained from learners prior to enrolment and prior to the commencement of their first unit of competency.

Educational and support services may include, but are not limited to:

- pre-enrolment materials;
- language, literacy and numeracy (LLN) programs or referrals to these programs;
- equipment, resources and/or programs to increase access for learners with disabilities and other learners in accordance with access and equity;
- flexible scheduling and delivery of training and assessment;
- counselling services or referrals to these services;
- information and communications technology (ICT) support;
- learning materials in alternative formats, for example, in large print;
- any other services that the RTO considers necessary to support learners to achieve competency.

Where appropriate, the Australian Academy of Interior Design will seek external assistance to ensure additional support services are available. You will be informed in case additional costs may be incurred to arrange access to external additional support services.

Language/Literacy and Numeracy

The Australian Academy of Interior Design makes appropriate concessions for language, literacy and numeracy issues of students where these concessions do not compromise the requirements of the relevant Training Package and the integrity, equity and fairness of assessment.

During the enrolment process, all students complete a brief non-invasive language, literacy and numeracy assessment to enable the Australian Academy of Interior Design to identify any issues that may need to be addressed prior to the commencement of training. Strategies to address these issues will be discussed with students and may include adjusting learning and assessment modes and methods.

The Australian Academy of Interior Design provide materials, resources and assessment tasks at a level of complexity required and also provide opportunities for repeated and supported practice.

Where can I get help with language, literacy and numeracy?

Individuals who want to get help with their literacy and numeracy can access information about the nearest LLN provider by calling the Reading Writing Hotline on 1300 655 506.

What is the Reading Writing Hotline?

The Reading Writing Hotline is funded by the Australian Government Department of Education, Science and Training. The project is managed by TAFE NSW - Access and General Education Curriculum Centre and is Australia's national telephone adult literacy and numeracy referral service. For the price of a local call from anywhere in Australia, the hotline can provide you with advice as well as a referral to one of 1200 providers of courses in adult literacy and numeracy.

What happens when I call the Hotline?

You will speak to an experienced adult literacy teacher who will advise you on ways you can access classes in your local area to improve reading, writing, spelling and maths skills. The information you give about yourself is confidential and will not be given to anyone else.

When can I call the Hotline?

You can call the Hotline at any time. If a teacher is unavailable to take your call, your name and number will be taken by the hotline paging service and your call will be returned.

Flexible Learning and Assessment

Attaining a Diploma of Interior Design (MSF50222) is a significant achievement and requires a lot of hard work and discipline. You have up to 36 months to complete the course but we encourage students to follow defined study schedules to achieve their certification sooner. On average, a student studying around 17.5 hours per week can complete the course in two and a half years.

Engaging with core subject matter and understanding new concepts and techniques will take approximately 7 hours per week, understanding and monitoring your progress (30 mins), preparing for and completing your assessment may take up to 10 hours per week.

The Australian Academy of Interior Design will provide you with a unique training plan to assist with time management and fitting studying around your work and life commitments.

If you've already completed a qualification, it may be possible to apply for credit transfer and/or recognition of prior learning (RPL) as long as sufficient and current evidence is provided as required. To learn more about credit transfer and recognition of prior learning please refer to the RPL and Credit Transfer Policy located in the Policies and Procedures section of the handbook.

For further information on how to apply for credit transfer and RPL, you can contact the Australian Academy of Interior Design.

Assessment Requirements

Throughout your course you will have milestones which will help you stay on track to complete your studies within the course duration. If you are having difficulty completing an assessment, you should discuss it with your trainer/assessor who will be able to provide support and guidance on assessment completion and staying on track with your studies.

As you are working on your assessments you should ensure to keep and back up digital copies of your work. The Australian Academy of Interior Design can accept no responsibility for lost assessment tasks.

Please note: You will have to complete assessment tasks again if your work goes missing and therefore it is important to keep a copy of your original assessment tasks.

Assessment malpractice

Assessment malpractice includes: cheating, collusion and plagiarism.

The Australian Academy of Interior Design regards the integrity of assessment as critical to its professional responsibilities as an RTO and therefore strives to ensure the assessment processes are not compromised. The Australian Academy of Interior Design has policies and procedures in place for dealing with assessment malpractice.

What is cheating?

Cheating within the context of the study environment, means to dishonestly present an assessment task or assessment activity as genuinely representing your own understanding of and/or ability in the subject concerned.

Some examples of cheating are:

- Submitting someone else's work as your own whether you have that person's consent or not.
- Submitting another author's work as your own, without proper acknowledgement of the author.
- To allow someone else to submit your own work as theirs.
- To use any part of someone else's work without the proper acknowledgement.

There are other forms of cheating not contained in this list. These are merely given as some examples. If you are unsure about whether any particular behaviour would constitute plagiarism or cheating, please check with your trainer prior to submitting your assessment work.

What is Collusion?

Collusion is the presentation of work, which is the result in whole or in part of unauthorised collaboration with another person or persons. It is your responsibility to ensure that other students do not have opportunity to copy your work.

What is Plagiarism?

Plagiarism is a form of cheating and includes presenting another person's or organisation's ideas or expressions as your own. This includes, however is not limited to: copying written works such as books or journals, data or images, tables, diagrams, designs, plans, photographs, film, music, formulae, web sites and computer programs.

What are the Penalties for Plagiarism or Cheating?

If a trainer suspects that you are cheating they will investigate further to establish evidence to support their suspicion. By looking at learning resources, searching on Google and reviewing previous or current student's work. If evidence to support the suspicion is established your trainer will then report their concerns to the Australian Academy of Interior Design's Training Manager. From there the following process will be followed:

1. The assessor will contact you in writing outlining their concerns with your submitted work.
2. You will then have an opportunity to respond to any allegations of cheating or plagiarism.
3. If the Training Manager's investigation confirms that you have engaged in cheating or plagiarism you will be advised of one of the following consequences:
 - If it is determined that your offence committed is minor or unintentional, you will be asked to resubmit your work and be given a formal warning in writing by the Australian Academy of Interior Design's Training Manager OR

- If it is determined that your offence committed is of a serious and intentional nature you will be un-enrolled in that unit immediately and have to re-enrol if you wish to complete that unit. Your result for that unit will be recorded as Not Competent. A cheating/plagiarism note will also be recorded against your student file. Notification of any such decision will be made in writing by the Australian Academy of Interior Design's Training Manager.
4. If the conduct is repeated or if the initial conduct is of a very serious nature (as determined by the Training Manager), such as knowingly falsifying assessment evidence, the student's enrolment may be terminated. In cases of termination, all fees paid will be non-refundable.

What if I don't agree with the decision?

If you disagree with the decision or the penalty imposed, you are entitled to lodge an appeal in accordance with the Appeals Policy and Process. For more information you may refer to the Complaints and Appeals section of the Student Handbook.

How do I avoid Plagiarism or Cheating?

Students are advised to note the following advice to avoid claims of plagiarism or cheating:

- Always reference other people's work. You may quote from someone else's work (for example, from websites, textbooks, journals or other published materials) but you must always indicate the author and source of the material.
- Always reference your sources. You should name sources for any graphs, tables or specific data, which you include in your assignment.
- You must not copy someone else's work and present it as your own.
- You must not falsify assessment evidence.
- You must not use Chat GPT, or other AI technology to help you write your assignments.

Code of Conduct

All Australian Academy of Interior Design students are expected to take responsibility for their own learning and behaviour during both training and assessment. Any breach of discipline will result in the participant being given a 'written warning'. Further breach will result in a participant being asked to 'show cause' as to why they should not be excluded from further participation in the program. A third breach will result in instant dismissal from the training environment. Where a breach is deemed as of a serious nature, as determined by the Student Services Manager, the student's enrolment may be terminated. In instances of dismissal and termination of enrolment, all fees paid will be non-refundable.

Personal interaction, staff-to-student and student-to-student is expected to be respectful. An aggressive manner or degrading and abusive language will be considered contrary to the Code of Conduct and a breach of discipline. Following are further instances of breaches to the Code of Conduct.

Discrimination

Discrimination means treating a person less favourably than another because of a personal attribute that they may have. Under State and Federal equal opportunity laws, discrimination based on attributes is unlawful. The attributes that can initiate a discrimination claim include:

- Gender
- Sexual orientation
- Age
- Race
- Religion
- Marital status
- Disability
- Colour
- Nationality
- Ethnicity
- National origin

Harassment

Harassment is any behaviour which is unwelcome, offends, humiliates or intimidates the person being harassed. Harassment will not be tolerated at the Australian Academy of Interior Design and disciplinary action will be taken against any employee or student involved in such behaviour. From a staff perspective, this may include termination of employment. From a student perspective, enrolment may be terminated, and all fees paid will be non-refundable.

Examples of verbal harassment

- Racist comments or jokes.
- Spreading rumours.
- Comments or jokes about a person's disability, pregnancy, sexuality, age, religion etc.
- Threats, insults or abuse.
- Offensive obscene language.

Physical Assault/Abuse

Physical abuse is an act of another party involving contact intended to cause feelings of physical pain, injury, or other physical suffering or bodily harm. Physical abuse will not be tolerated in any shape or form and any instances of physical abuse will result in instant termination of the student's enrolment.

Some examples of physical abuse include:

- Striking
- Punching
- Pushing, pulling
- Slapping
- Striking with an object
- Excessive pinching on the body
- Kicking
- Tripping
- Kneeing

- Strangling
- Head-butting
- Placing in stress positions (tied or otherwise forced)
- Cutting or otherwise exposing somebody to something sharp
- Throwing or shooting a projectile
- Blinding a person or causing impairment of sight.
- Biting
- Eye poking

Change of Personal Details

Students are required to ensure their personal details recorded with the Australian Academy of Interior Design are up to date at all times. Students must advise the Australian Academy of Interior Design of any changes in personal details immediately in writing. If the student has an applicable loan and/or financial arrangement, it is the student's direct responsibility to notify the financial service provider (e.g. Debit Success) of any change in personal details that may adversely affect payment arrangements.

All certification documentation will be sent to the email address and/or posted to the mailing address provided by the student.

Evaluation and Feedback

As a matter of quality assurance and continuous improvement, the Australian Academy of Interior Design relies heavily on the feedback from students. The Australian Academy of Interior Design requires all students to complete various feedback and evaluation forms.

At the end of the training students will be asked to provide feedback by completing a Learner Questionnaire and Course Feedback Form. Learner Questionnaires may also be emailed to a student. Participation in the survey is highly valued, but voluntary. The Australian Academy of Interior Design will fully protect student's anonymity and the confidentiality of student's response within the limits of the law.

Making the Most of your Training

It is very important to make the most of your training opportunity. Please note it is your responsibility to do this.

To optimise your own learning and successful completion, the Australian Academy of Interior Design encourages you to do the following:

1. Complete all required reading and learning activities;
2. Ensure you have a clear understanding of the assessment requirements;
3. Take responsibility for the quality of evidence that you submit to the Assessor;
4. Keep track of your progress;
5. Complete and submit all assessments and tasks using clear and concise language;
6. Be willing to contact your trainer/assessor if you do not understand the training activity or assessment task.



Course Information

We are registered to offer nationally endorsed training in MSF50222 Diploma of Interior Design (Release 2).

This training program is competency based which means that training and assessment focus on the development and recognition of a person's ability to apply relevant knowledge and skills to perform workplace tasks to a specified standard.

The Australian Academy of Interior Design also offers other non accredited courses, as listed on our website. These courses do not lead to AQF certifications.

Training Programs

The specific skills and knowledge required for particular activities are set out in Units of Competency which can be grouped together to formulate the completion of a nationally recognised qualification. Nationally recognised qualifications are outlined in training packages. These can be viewed at www.training.gov.au.

Each qualification has a list of employability skills and foundation skills which describe the non-technical skills and competencies that are important for effective and successful participation in the workforce. For each qualification, there are specific employability skills listed under the following headings:

1. Communication
2. Teamwork
3. Problem solving
4. Initiative and enterprise
5. Planning and organizing
6. Self-management
7. Learning
8. Technology.

These employability skills will be part of the assessment requirements of a nationally accredited course.

Competency-Based Training

The aim of Competency Based Training is to assess the student's ability to complete the activities in each unit.

The Australian Academy of Interior Design will assess the student's ability (or competence) to carry out the activities in each unit of competency.

Competencies are normally expressed in terms of a unit of competency. Competencies include the skills and tasks that are required in the workplace. When a student is being assessed on these activities, the student will be required to perform the activity to the level required in the workplace.

All assessment results are recorded in the Online Learning Centre (OLC) which is the Australian Academy of Interior Design's student portal. Students have access to their assessment outcomes via the student portal or by request. Certification documents are also issued from the results recorded on the student portal.

Flexible Delivery

Flexible delivery means providing training that best suits the participant and/or employer. The Australian Academy of Interior Design offers courses through distance delivery. Please refer to relevant course brochures and website for course information/delivery options available.

Distance Learning (Online)

The Australian Academy of Interior Design delivers the training of its Distance courses in an online self-paced format. Students are provided with all learning materials, assessment tools, student forums and other resources required to complete their particular course. Students are able to work through these learning materials at their own pace.

Where necessary, the student may contact Trainers for assistance, but our Trainers will not contact students unless requested.

Computer Specifications and Requirements

The software requirements to ensure the course materials are accessible are as follows:

- Latest versions of Word and Adobe Reader are required
- We recommend Google Chrome as an Internet Browser most compatible with the Online Learning Centre.
- Adobe Acrobat Reader (or an alternative PDF reader)
- Microsoft Word, Excel and PowerPoint (or Google Docs, Sheets and Slides) or equivalent

We recommend an internet speed of at least 5mpbs. You can check your internet speed with free speed checkers such as this one. Slower connections may suffice for accessing your materials through Adobe Reader. However, you may experience quality and downloading issues with other multimedia resources. From time to time we attend to maintenance and upgrades of our Online Learning Centre (OLC); where ever possible you will be informed of any times when the OLC will not be available. We aim for a 99.99% up-time for the OLC.

What are the resources needed to complete the course?

The Australian Academy of Interior Design will provide learners access to the Online Learning Centre (OLC) where they will access the following:

- Course content
- Download and upload assignments
- Receive feedback
- Student Handbook
- Assignment Briefs
- Marking guide

- Assignment supplementary materials
- Monitored Student Forum
- Student Services team to support learners with administrative issues by phone or email
- Qualified trainers through:
 - student portal messaging
 - Email

Learners are required to have access to the following:

- Black pens with a variety of nib sizes (e.g. Fineliner 0.1, 0.3, 0.5, 0.7)
- A3 Portable drawing board
- A3 Plain white drawing paper
- A3 Tracing paper
- Cutting mat
- Triangular architectural scale ruler appropriate to your region
- Colouring pencils (e.g. Polychromos by Faber-Castell)
- Masking tape
- Metal ruler
- Set squares (30/60 degree and 45/45 degree)
- Circles template
- 2H, HB and 2B pencils (or a clutch pencil)
- Furniture template scale 1:50 (multiple scale if possible)
- Scalpel
- Compass or compass app
- A Computer (PC or Mac) with Internet (a minimum reliable speed of 5mbps is recommended)
- Google Chrome Web Browser
- Webcam or integrated camera and to participate in webinars – Optional
- CAD software such as Sketchup Pro and/or AutoCad (Student versions acceptable)

- A device to record presentations and take photographs
- Samples e.g. fabric, wallcovering, paint, furniture and flooring samples and images.

Evidence Requirements

Evidence is the material proof that you have performed the specified competency or task to the required standard. Your evidence requirements will be determined by the Unit of Competency, employability skill requirements, industry expectations, government regulations, and your qualifications and current experience. Evidence can take many forms and you will be required to present more than just one piece of evidence.

Assessment tools that we will provide to you set out the exact requirements for evidence for each unit/module.

Examples of evidence could include one or more of the following:

1. Specific assessment tasks set by your assessor
2. Observation reports
3. Certificates and awards
4. Examples of work completed or special projects
5. Current licenses
6. Position descriptions and performance reviews
7. Question responses
8. Tests

Your evidence must also demonstrate the following:

1. That you can do the job or task to the required standard
2. Understand why the job should be done in a particular way
3. Handle unexpected issues or problems
4. Work with others 'in a team'

5. Do more than one thing at a time, e.g. perform the task and be aware of the occupational health and safety requirements
6. Know the workplace rules and procedures

Assessment

Assessment is defined as the process of collecting evidence and making judgments on the nature and extent of progress towards the performance requirement set out in a (competency) standard, or learning outcome, and, at the appropriate point, making a judgment as to whether competency has been achieved'.

In simple terms, assessment is the process of collecting evidence and making judgments on whether competency has been achieved. In order to be assessed as competent (C), you will need to provide evidence which demonstrates that you have the essential knowledge and skills to successfully complete the relevant unit to the required standard. Competency is simply about demonstrating that you can do the task with confidence to the required industry standard as endorsed by the training package or VET accredited Course.

An assessment of 'Not Yet Competent' (NYC) is not a failing mark. It is simply a request for more information or further confirmation of the knowledge and skills required. Our trainers will provide feedback to guide your resubmission and are available for contact if required. The student will be required to successfully resubmit the assessment with the required rectifications to achieve a competent result. The student will be allowed a limit of three submissions per unit of the course. To be eligible for the qualification, the student must receive a competent result for all units of the course.

Assessment, within competency-based approaches to learning, is criterion referenced. This means it identifies an individual's achievements of defined outcomes, rather than relating their performance to that of other learners or trainees.

Assessment methods used may include a combination of the following:

- Research
- Interviews, feedback sessions, role-playing
- Drawings and models, concept boards, material boards
- Production documentation
- Structured activities
- Reflection
- Mathematical measurements, project cost estimations, etc.

Principles of Assessment

There are four key principles that are a part of the assessment process:

Fairness

The individual learner's needs are considered in the assessment process.

Where appropriate, reasonable adjustments are applied by the RTO to take into account the individual learner's needs.

The RTO informs the learner about the assessment process and provides the learner with the opportunity to challenge the result of the assessment and be reassessed if necessary.

Flexibility

Assessment is flexible to the individual learner by:

- reflecting the learner's needs;
- assessing competencies held by the learner no matter how or where they have been acquired; and
- drawing from a range of assessment methods and using those that are appropriate to the context, the unit of competency and associated assessment requirements, and the individual.

Validity

Any assessment decision of the RTO is justified based on the evidence of performance of the individual learner.

Validity requires:

- assessment against the unit/s of competency and the associated assessment requirements covers the broad range of skills and knowledge that are essential to competent performance;
- assessment of knowledge and skills is integrated with their practical application;
- assessment to be based on evidence that demonstrates that a learner could demonstrate these skills and knowledge in other similar situations; and
- judgement of competence is based on evidence of learner performance that is aligned to the unit/s of competency and associated assessment requirements.

Reliability

Evidence presented for assessment is consistently interpreted and assessment results are comparable irrespective of the assessor conducting the assessment.

Rules of Evidence

The Rules of Evidence are closely related to the principles of assessment and provide guidance on the collection of evidence to ensure that it is valid, sufficient, authentic and current as follows:

Validity
The assessor is assured that the learner has the skills, knowledge and attributes as described in the module or unit of competency and associated assessment requirements.
Sufficiency
The assessor is assured that the quality, quantity and relevance of the assessment evidence enables a judgement to be made of a learner's competency.
Authenticity
The assessor is assured that the evidence presented for assessment is the learner's own work.
Currency
The assessor is assured that the assessment evidence demonstrates current competency. This requires the assessment evidence to be from the present or the very recent past.

Assessment Results

Results of assessment are provided to students as soon as practicable. These results are available through your student portal. Assessment results are confidential at all times and will not be given to any other party unless a written request signed by the student is received in advance.

Reasonable Adjustment

Students with disabilities or learning difficulties are encouraged to discuss with the Australian Academy of Interior Design any 'reasonable adjustment' to learning and assessment processes which they consider would be necessary or assist them in the performance of their studies.

Careful consideration will be given to any requests for reasonable adjustment of this nature, and, where reasonably practicable,

such adjustments will be made. There may however be circumstances where it will not be reasonable or reasonably practicable for the Australian Academy of Interior Design to accommodate or where other adjustment may be more appropriate. Reasonable adjustments cannot compromise the integrity of competency-based training and assessment.

Additional Submission and Support

Further submission attempts may be provided only at the discretion of the Australian Academy of Interior Design. Students may request additional submission attempts—approval will be at the discretion of the training management. This discretion will rely on the quality of previous submissions and the consideration of the study making progress through extra effort of the student to address the feedback required.

Should the submission attempts be insufficient to gain competency OR if a discretionary attempt is not granted due to insufficient evidence of extra work, students will have the opportunity to purchase re-submissions/re-assessments. The student is advised to contact student services at info@interiordesignacademy.com.au to assess the need for course extension and/or support services provided by the Australian Academy of Interior Design.

Extensions for Assessment

It is expected that all assessment tasks are handed in on the due date. Should you require additional time to complete an assessment, you must communicate with your assessor and apply for an extension. Standard extensions fees are as follows: **\$125** for each additional month requested beyond the student's original course end date. No refund will be approved for any extension period not utilised.

Assessment and Progression

The modules on this course are designed to be delivered through a sequential learning design, which allows you to develop skills and competencies in a cumulative manner. You will be introduced to new topics module by module

and are required to complete each module before beginning work on the next one. For example, a student working on module 2 must complete (and be deemed competent in) that module before moving on to module 3.

If you are not yet deemed competent after submitting work for a module, you will have the opportunity to resubmit revised assessment work following trainer feedback. If required, further submission attempts may be possible at the discretion of the Australian Academy of Interior Design and subject to a fee (see 'Additional Submission and Support' in the Student Handbook for further details).

You will not be permitted to proceed to later modules without first being deemed competent in earlier modules unless prior written approval to do so has been given by the Australian Academy of Interior Design. Requests for module progression without achieving competency must be made in writing to your Trainer in a timely manner. Approval of such requests will be made on a case-by-case basis and decisions made by the Australian Academy of Interior Design are final and final.

If you are applying for a request for module progression in the absence of competency you are advised that you will NOT be able to receive your RTO qualification until such time as full competency across all modules has been achieved. You may, however, be able to receive a Statement of Attainment for all modules for which you have been deemed competent.

Awards

Once a student has successfully completed all assessment requirements for their applicable course, the student will be issued with certification documentation.

Students who have not met all requirements for the course or students who withdraw from a course and have paid relevant fees have the right to receive Statement of Attainment from the Australian Academy of Interior Design for the units of competency they have been deemed competent in.

Students should note that if you are paying for your course via the payment plan option, you will be unable to receive their qualification or statement of attainment until course fees are paid in your entirety.

The Qualification or Statement of Attainment will be emailed to the current email address and mailed to the current address noted in the Australian Academy of Interior Design's student portal. The student should allow 30 calendar days from the date of completion of the course for the issuance of your award.

Important Information regarding awards at the Australian Academy of Interior Design

- Awards will only be issued to students whose financial status with the college is up to date
- It is the responsibility of the student to understand their obligations with regard to fees due for units studied
- For a student to be eligible to receive an award, the student must successfully complete all the units listed
- Training package courses have been submitted to the regulatory authorities, and all units specified in that course are the subjects a student must complete to be eligible to receive that award.

Certification documents can be re-issued to a student, upon written request. Replacement certification documentation will incur a fee of **\$50** per request. See the Certificate Issuance Policy for more details.

Course Delivery

The Australian Academy of Interior Design ensures the following resources are in place:

- Trainer/assessors and assessors with appropriate qualifications and experience;
- Course materials appropriate to the methods of delivery and assessment requirements;
- All necessary copyright authorisations;
- Appropriate equipment and facilities.

Training and assessment methods used by the Australian Academy of Interior Design meet specific quality requirements and are chosen to best suit the unit of competency.

A number of delivery methods will be used throughout the training to help you achieve the necessary skills. Learning is a partnership that involves participation from all involved.

Delivery methods may include, but are not limited to:

- audio/visual presentations
- group participation/discussions
- trainer/facilitator instruction
- practical activities
- self-paced activities
- individual projects
- case studies.

Recognition of Prior Learning (RPL)

All students have the opportunity to apply for recognition of prior learning. This means that you can submit evidence for one or more Units of Competency, and have it assessed by a qualified assessor without completing the training.

The Australian Academy of Interior Design believes that no learner should be required to undertake a unit of competency for which they are already able to demonstrate satisfactory achievement of the performance outcomes, as stated in the endorsed training package or nationally recognised course.

The Australian Academy of Interior Design aims to maximise the recognition of a learner's prior skills and knowledge whilst at all times maintaining the integrity and standards of the defined learning outcomes of the specific qualification or course of study. Students who consider they already possess the competencies identified in all or part of any course/qualification offered by the Australian Academy of Interior Design may seek recognition.

If you think you have the necessary knowledge and skills to match a Unit of Competency at the required standard, you need to contact your trainer or any Australian Academy of Interior Design admissions staff who will provide the information you need to complete an application. A fee of **\$150** will be charged for each unit applied for RPL, in addition to the regular course fee.

Recognition Process

Recognition is a method of assessing if you have evidence of competency for a particular unit of competency that you are enrolled in. It is important to remember that recognition is an assessment process, not an assumption of competence.

Recognition is the determination, on an individual basis, of the competencies obtained by a student through:

- previous formal/informal training;
- work experience; and/or
- life experience.

Recognition therefore determines the subsequent advanced standing to which the student is entitled in relation to a course/qualification. The main focus of recognition is what has been learned rather than how, where or when it was learned. Recognition focuses on both the demonstration of competence and the currency of that competence to industry standards.

It is important to note, the onus is on the student to present evidence and demonstrate pre-existing competence to justify a claim for recognition and present their case to the satisfaction of the assessor.

Any documents that you provide to support your claim of competency must be the originals rather than copies. Your original documents will be photocopied and returned to you. It is also expected that any evidence submitted is your own and if any part of the work is the work of others, that this is formally acknowledged and advised.

How to apply for RPL

You will need to provide the following to AAID:

- Certifications for equivalent qualifications (including transcripts and learning outcomes achieved within the last 5 years)
- Portfolio of evidence mapped against the outcomes and competencies of the Diploma of Interior Design (MSF50222) demonstrating practical knowledge and skills.

It is possible to apply for RPL for one or more of the core or elective units, however, you must clearly identify which unit and which outcomes you are claiming competency. If you wish to discuss the RPL process you should contact Student Services at info@interiordesignacademy.com.au in the first instance.

Recognition Decision

Regardless of the type of evidence that you submit, Assessors must be confident that the evidence meets the following criteria:

- Full requirements of the unit(s) of competency;
- Any regulatory requirements;
- Authenticity - That it is your own evidence and can be authenticated;
- That you can perform the competency consistently and reliably;
- Is at the standard expected in the industry and set out in the Australian Qualification Framework (AQF);
- Sufficiency - There is sufficient evidence to make a judgment.

Your application will be assessed by an AAID approved trainer. The recognition process may include the necessity to demonstrate the application of skills. Where it is identified that this is required to assist the assessor in their judgement of competency, this will be arranged at either the student's workplace or at the Australian Academy of Interior Design's training facilities.

The Australian Academy of Interior Design is committed to ensuring that all judgments made by trainers against the same competency standards are consistent. Your trainer will examine the evidence that you present and then make a judgment on that evidence which will be either:

- Competent (C) - you have been deemed competent against all the requirements of the Unit/s of Competency
- Not Yet Competent (NYC) - you have not yet demonstrated competency to all requirements.

Your trainer will advise you of the outcome of your application for RPL and advise where gap training and/or assessment is required.

Credit Transfer

The Australian Academy of Interior Design recognises the AQF qualifications and Statements of Attainment issued by other Registered Training Organisations (RTOs). Where a student has completed a unit/s of competency prior to enrolling with the Australian Academy of Interior Design that are included in the course in which the student is enrolling, the student may apply for recognition. This may result in the student not having to complete the same unit of competency again. This is known as credit transfer. Should you wish to seek credit transfer, contact the Australian Academy of Interior Design Admissions Staff for a Credit Transfer Form. Applying for credit transfer is free of charge.

See the RPL and Credit Transfer Policy for more details.



Policies and Procedures

Access and Equity

The Australian Academy of Interior Design is committed to providing opportunities to all people for advancement, regardless of their background. We support government policy initiatives and provide access to our training for all those seeking to undertake it.

We ensure that our student selection criteria are non-discriminatory and provide fair access to training for the disadvantaged. In addition, we may liaise with agencies and government departments for assistance in matters of language, literacy and numeracy difficulties when necessary.

Complaints and Appeals Policy

Complaints

The Australian Academy of Interior Design supports the rights of a student to lodge a grievance or complaint if a student feels they have been treated unfairly. The Australian Academy of Interior Design will do everything possible to address grievances or complaints in an unbiased and professional manner.

Complaints are welcomed as a means of ensuring that we identify and overcome problems faced by students and provide an opportunity to improve our business and/or the delivery of our training programs.

1. The Australian Academy of Interior Design recommends for students to first try and resolve the complaint/appeal informally by contacting their trainer or the Australian Academy of Interior Design student support team at 03 8658 1593 or via info@interiordesignacademy.com.au. The complaint should contain your full name and student number, and a detailed description of the reason for the complaint.
2. Where a dispute cannot be resolved informally, or a student is unhappy with the outcome, they may lodge a formal complaint to the academy via email at complaints@interiordesignacademy.com.au.
3. The Student Services Manager of the Australian Academy of Interior Design is notified each time a formal complaint has been submitted.
4. The Student Services Manager of the Australian Academy of Interior Design will initiate a transparent, participative process to deal with the issues at hand.
5. Complaints are to be resolved within 10 working days of the initial application. The Student Services Manager of the Australian Academy of Interior Design may delegate responsibility for the resolution of the complaint as required. In all cases the final conclusion will be endorsed by the Australian Academy of Interior Design's Training Manager.
6. The student will be advised in writing of the outcome of their complaint via email.
7. All complaints will be handled as Staff-In-Confidence.

Where you remain unhappy with the outcome:

- The student has the right to request a review of the appeal by an independent party.
- The student will be responsible for the costs of the independent review.
- The Australian Academy of Interior Design will cooperate fully with this independent review.

Appeals

The Australian Academy of Interior Design supports the rights of a student to lodge an appeal against any assessment decision and will not impair that right in any way. The Australian Academy of Interior Design will do everything possible to address the appeal in an unbiased and professional manner.

Any student wishing to appeal the assessment decision/judgment should follow the steps outlined below.

1. The Australian Academy of Interior Design recommends for students to first try and resolve the appeal informally by contacting their trainer to discuss their assessment result and why they believe that the trainer's judgment is incorrect showing evidence of how they have addressed the assessment criteria. Students may also contact the Australian Academy of Interior Design support team at 03 8658 1593 or info@interiordesignacademy.com.au.
2. Where an appeal cannot be resolved informally, or a student is unhappy with the outcome, they may lodge a formal appeal via email at appeals@interiordesignacademy.com.au.
3. The appeal request should contain the following information:
 - a The student's full name and number
 - b The unit/subject being assessed
 - c Each assessment task name/number (where the result is being disputed) including why the result should be overturned. The student should refer directly to how they believe they have met the requirement of each task in detail and referencing any evidence to support their claims.
4. The Student Services Manager of the Australian Academy of Interior Design is notified each time a formal appeal has been submitted.
5. The Training Manager will initiate a transparent, participative process to deal with the issues at hand.
6. Appeals are to be responded to within 10 working days of the initial application.
7. The Training Manager of the Australian Academy of Interior Design may delegate responsibility for the resolution of the appeal as required. In all cases the conclusion will be endorsed by the Australian Academy of Interior Design's Training Manager.
8. The student will be advised in writing of the outcome of their appeal via email.
9. All appeals will be handled as Staff-In-Confidence.
 - Where the student is unhappy with the outcome, they can follow the formal appeal process outlined below:
 - The student has the right to request a review of the appeal by an independent party.
 - The student will be responsible for the costs of the independent review.
 - The Australian Academy of Interior Design will cooperate fully with this independent review.
 - The Australian Academy of Interior Design will aim to complete this appeal process as quickly as possible and within a total of 30 days. Where an appeal will take more than 60 days to be resolved, the RTO will advise and inform the appellant in writing. The Australian Academy of Interior Design will keep the student informed of the progress of the appeal throughout the process.

See the Complaints and Appeals Policies for more details.

Transition of Superseded Courses

The nationally recognised training courses delivered by the Australian Academy of Interior Design may be superseded by a new training package qualification. If required, the Australian Academy of Interior Design will apply to add the replacement training package qualification to its scope as soon as practicable but no later than 12 months from the date of publication of the replacement qualification on the national register.

The Australian Academy of Interior Design will manage the transition of students to the updated course as soon as is practicable, but no later than 12 months from the date of publication of the replacement qualification on the national register. There may or may not be a fee payable to transition to the updated course.

Student Records

All student records are subject to the Australian Academy of Interior Design's Privacy Policy. However, students may reasonably access their files by notifying the Australian Academy of Interior Design. The management will endeavour to give students prompt access to their own files where reasonable notice is given.

The Australian Academy of Interior Design will provide students with timely access to their participation and progress throughout the training course.

Procedure

- Students are able to view their grades, trainer feedback and the list of completed units via the student portal. For any other requests on their course progress students are to contact student support by info@interiordesignacademy.com.au. Students must list their full name, date of birth, address, course enrolled and Student ID.
- Alternatively, students can send a written request to: The Australian Academy of Interior Design, Level 31, 120 Collins Street, Melbourne 3000 Victoria

- Students will receive notification that the request has been received and may be contacted by the Australian Academy of Interior Design to obtain further information.
- The Australian Academy of Interior Design will issue a letter of confirmation outlining student results for the course within 7 working days of receiving the request. Students will receive this information by email.

Record Keeping Policy for Assignments and Student Information

The Australian Academy of Interior Design has effective administrative and records management procedures in place that maintains student data in a secure and confidential manner.

Records of results, qualifications and Statements of Attainment for students currently enrolled are stored in individual student files. Electronic files are kept up to date and backed up regularly, with the backup copy being kept in a secure location. All student records are stored for retention archiving and retrieval for a period of 30 years.

The Australian Academy of Interior Design retains all rights to assignments, tests, exams, projects and assessments. All soft copies of assessments submitted are retained via the Australian Academy of Interior Design Dropbox. All assessments will be kept for a period of 6 months from the date on which the judgment of competence for the student was made as outlined in ASQA's General Direction: Retention requirements for completed student assessment items.

Fee Payment and Refund Policy

All enrolments are subject to written acceptance and Further Learning Ltd (hereafter referred to as the Australian Academy of Interior Design) reserves the right to decline any enrolment application for any reason it sees fit.

If an enrolment is declined, irrespective of the reason, the prospective student will receive a full and complete refund of any course fees paid.

A student has two payment options upon enrolment.

Home study: The first is an upfront fee of \$2,895, with \$1,500 on day of enrolment, and the balance 14 days later. The second option is a payment of \$249 on day of enrolment, plus 11 monthly payments of \$249, on the anniversary of your first payment, to a total of \$2,988.

Classroom Based: The first is an upfront fee of \$5,495, with \$1,500 on day of enrolment, and the balance 14 days later. The second option is a payment of \$499 on day of enrolment, plus 11 monthly payments of \$499, on the anniversary of your first payment, to a total of \$5,988.

If a student decides to withdraw from their course within 14 days of their enrolment being approved, following the Language, Literacy, Numeracy (LLN) test, they can request a full and complete refund of course fees paid. No refunds will be issued after 14 days.

The Australian Academy of Interior Design reserves the right to terminate a student's enrolment at any time if we deem their behaviour inappropriate and/or unacceptable. The Australian Academy of Interior Design has discretion as to whether fees should be refunded in whole, in part, or at all, in such circumstances.

A qualification will only be granted upon successful completion of all assignments for the given course.

In the case where assignments do not meet the required standard, the student will receive support from their tutor and be given the opportunity to resubmit the relevant assignments

subject to the Resubmission Policy available through the Online Learning Centre.

Certificates and Statements of Attainment are issued to students who are assessed as competent in the units completed. The cost of the certificates is included in the course fees.

Students are responsible for the safe storage of their Certificates and Statements of Attainment. If a student requires a reissue of their Certificate or Statement of Attainment, a certificate re-issue fee of \$50 will be charged.

Special Consideration

The Australian Academy of Interior Design understands that some students may experience prolonged difficulties that may impact on their ability to complete their course or a significant disadvantage as a result of a course change due to updates in the training packages that may not be addressed by:

- Extending the maximum duration of your course
- Providing additional learning support services
- Facilitating your Transfer to a different the Australian Academy of Interior Design course; or
- Providing you with the option to complete an older version of the course (subject to availability and compliance with relevant regulations)

10. In such cases, students should apply for a special consideration via email to info@interiordesignacademy.com.au.

The Australian Academy of Interior Design may grant special consideration in circumstances where:

- you are up to date with all course fees; and submit a special consideration request via email to the Australian Academy of Interior Design, including the relevant sections completed by a medical doctor (where applicable) and any other requested additional supporting documentation
- you have applied for and been granted a course deferral and the circumstances under which you were granted a course deferral are

continuing and serious circumstances which will materially affect your ability to continue with your course; or

- there has been a material change to your course resulting in material disadvantage to you which cannot be addressed as mentioned above.

If special consideration is granted, the Australian Academy of Interior Design may agree to:

- an extension of the duration of the course;
- provide you with additional support services;
- release you from the payment of future instalments; and/or
- grant a pro rata refund of the Course Fees (taking into account the portion of the course that has been completed and the costs associated with the provision of learning materials).

Without limitation, special consideration will not be given if:

- you change jobs;
- your work hours change;
- you move address (including interstate or international moves);
- your course changes under clause 15 as a result of a regulatory change governing the Australian Academy of Interior Design;
- you find the course more difficult, time consuming or stressful than you had expected; or
- you are made redundant, retrenched, or otherwise resign from or terminate your employment or have your employment terminated.

Exceptions

In the unlikely event that the Australian Academy of Interior Design is unable to deliver your course in full, however in the event that this occurs:

- you will be offered a refund for the part of your course that has not been assessed
- The refund will be paid to you within two weeks

of the date on which the course ceased being provided.

Privacy Policy

The Australian Academy of Interior Design will follow the Australian Privacy Principles in the management of all student and staff information, however allowing access as to all information as required by relevant National and State Training Authorities for the purpose of monitoring and/or auditing the Australian Academy of Interior Design's operations as an RTO.

The purpose of the privacy policy is to:

- describe the types of personal information that we collect, hold, use and disclose;
- outline our personal information handling systems and practices;
- enhance the transparency of our management of personal information;
- explain our authority to collect personal information, why it may be held by us, how it is used and how it is protected;
- notify whether we are likely to disclose personal information and, if so, to whom;
- provide information on how personal information can be accessed, correct it if necessary and complaint if you believe it has been wrongly collected or inappropriately handled.

The Australian Academy of Interior Design (AAID) is committed to the protection of student and client privacy by acting in accordance with the requirements of the Privacy Act and the National Privacy Principles. The National Privacy Principles control the way in which AAID may collect, store, use and disclose student or client personal information including any sensitive information entrusted with us.

The amount and type of information we hold depends on the nature of the relationship we have with clients and the extent to which they have used our services. Student and client details are held and stored confidentially on site and this information is not released to any other company/client/student without prior permission

from the student or client involved.

See the Privacy Policy on AAID's website for more details.

Workplace Health and Safety (WHS)

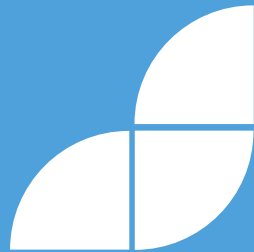
The Australian Academy of Interior Design is committed to providing a safe and healthy learning and work environment. The safety of our students and staff is of primary importance in all activities and operations of our organisation. We are committed to implementing, maintaining and continuously improving work health and safety in all of our facilities and operations.

The Australian Academy of Interior Design encourages all persons to regard accident prevention and safety as a collective and individual responsibility.

The Australian Academy of Interior Design recognises its responsibility under the Workplace Health and Safety and related regulations. The CEO has responsibility for ensuring the health and safety of staff, students, contractors and visitors. This includes:

1. provide and maintain safe plant, equipment and systems of work.
2. provide, monitor and maintain systems for safe use, handling, storage and transportation of plant, equipment and substances.
3. maintain the workplace in a safe and healthy condition.
4. provide adequate facilities to protect the welfare of all employees.
5. provide information, training and supervision for all staff and contractors, helping them to integrate WHS into their work areas and roles.
6. provide information, where relevant, to students, allowing them to learn in a safe manner.
7. check WHS system compliance via ongoing auditing.

8. integrate continuous improvement into WHS performance.



AUSTRALIAN
ACADEMY
OF INTERIOR
DESIGN

RTO INFORMATION

Document Name

Student Handbook v4.0

RTO Code

46046

RTO/Company Name

Australian Academy of Interior Design

- A.** Level 31, 120 Collins Street, Melbourne 3000 Victoria
- W.** www.interiordesignacademy.com.au
- E.** info@interiordesignacademy.com.au
- P.** 03 8658 1593